



20 May 2008

“Drill - Define - Mine”

Les Davis – Managing Director

ASX: SLR

ABN: 38 108 779 782

www.silverlakeresources.com.au

Important Notice and Disclaimer



Silver Lake Resources Limited has prepared this presentation based on information available to it. No representation or warranty, express or implied, is made as to the fairness, accuracy, completeness or correctness of the information, opinions and conclusions contained in this presentation.

To the maximum extent permitted by law, none of Silver Lake Resources Limited, its directors, employees or agents, advisers, nor any other person accepts any liability, including, without limitation, any liability arising from fault or negligence on the part of any of them or any other person, for any loss arising from the use of this presentation or its contents or otherwise arising in connection with it.

This presentation is not an offer, invitation, solicitation or other recommendation with respect to the subscription for, purchase or sale of any security, and neither this presentation nor anything in it shall form the basis of any contract or commitment whatsoever. This presentation may contain forward looking statements that are subject to risk factors associated with gold exploration, mining and production businesses. It is believed that the expectations reflected in these statements are reasonable but they may be affected by a variety of variables and changes in underlying assumptions which could cause actual results or trends to differ materially, including but not limited to price fluctuations, actual demand, currency fluctuations, drilling and production results, reserve estimations, loss of market, industry competition, environmental risks, physical risks, legislative, fiscal and regulatory changes, economic and financial market conditions in various countries and regions, political risks, project delay or advancement, approvals and cost estimates.

The information in this presentation that relates to mineral resources and exploration results are based on information compiled by Mr Christopher Banasik who is a Member of the Australasian Institute of Mining and Metallurgy. Any statement herein, direct or implied, as to a potential gold deposit is conceptual in nature and a reference to the targeted gold potential and not to any JORC compliant Mineral Resource. Mr Banasik is a full time employee of Silver Lake Resources Ltd, and has sufficient experience which is relevant to the style of mineralisation under consideration to qualify as a Competent Person as defined in the 2004 edition of the JORC Code. Mr Banasik has given his consent to the inclusion in this presentation of the matters based on the information in the form and context in which it appears.



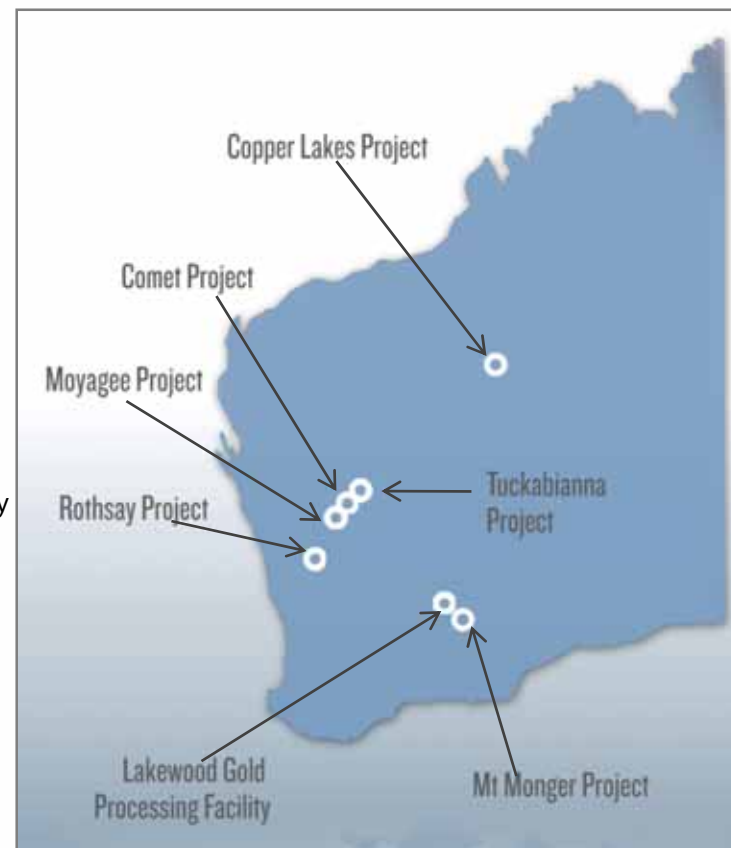
Agenda

- Company Overview
- Milestones
- Strategy and objectives
- Mount Monger Operations
- Murchison project
- Finance
- Summary

Company Overview



- ASX Code SLR
- Issued Securities 153.4M shares
- Unlisted 26.1M options
- Market Cap \$56M (@ \$0.36)
- Directors Les Davis - Managing Director
Chris Banasik - Director Exploration and Geology
Paul Chapman - Chairman
Peter Johnston - Non Executive Director
Brian Kennedy - Non Executive Director
David Griffiths - Non Executive Director



Milestones



- ✓ September 2007 Acquired projects (830,000 oz Au JORC resource)
- ✓ November 2007 \$30M IPO
Acquired 300,000 tpa processing facility
- ✓ December 2007 First ore production - Daisy Milano
- ✓ January 2008 Commenced drilling
- ✓ March 2008 Acquired Comet @ <A\$7 oz Au
Resource upgrade - 1.1M oz Au
- ✓ April 2008 High grade intersections at Caledonian
Initiated Murchison pre feasibility study
Commissioned processing facility
First gold pour / cash flow



Strategy & Objectives

CORPORATE STRATEGY

- Build a low cost, long life, gold business

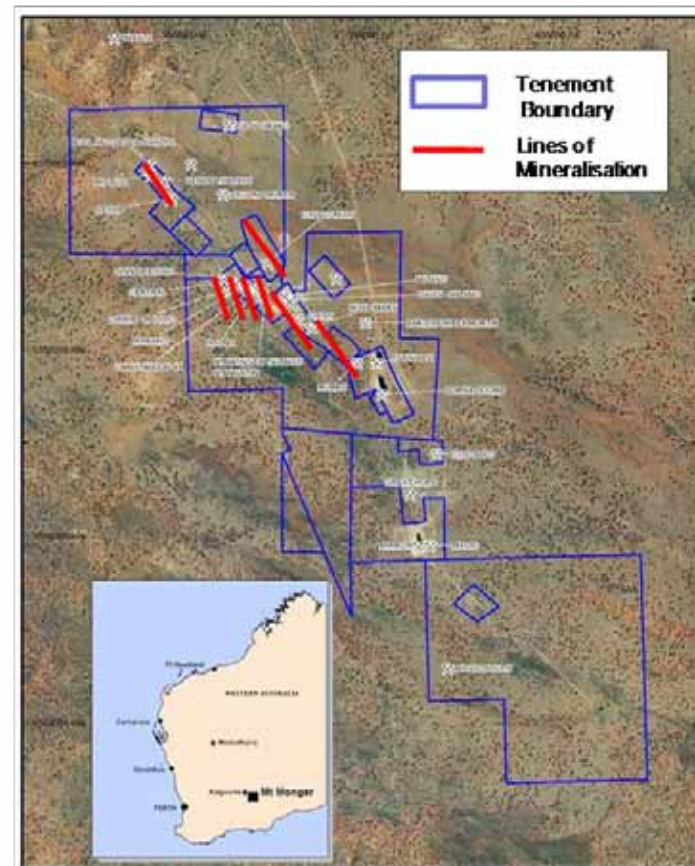
BUSINESS OBJECTIVES

- Multiple mines and multiple mining centres
- Cash cost of < A\$500 oz
- Strategic assets:
 - high grade
 - JORC resources / near term production ability
 - prospective regions / significant upside
- Exploration growth
- Sound financial position

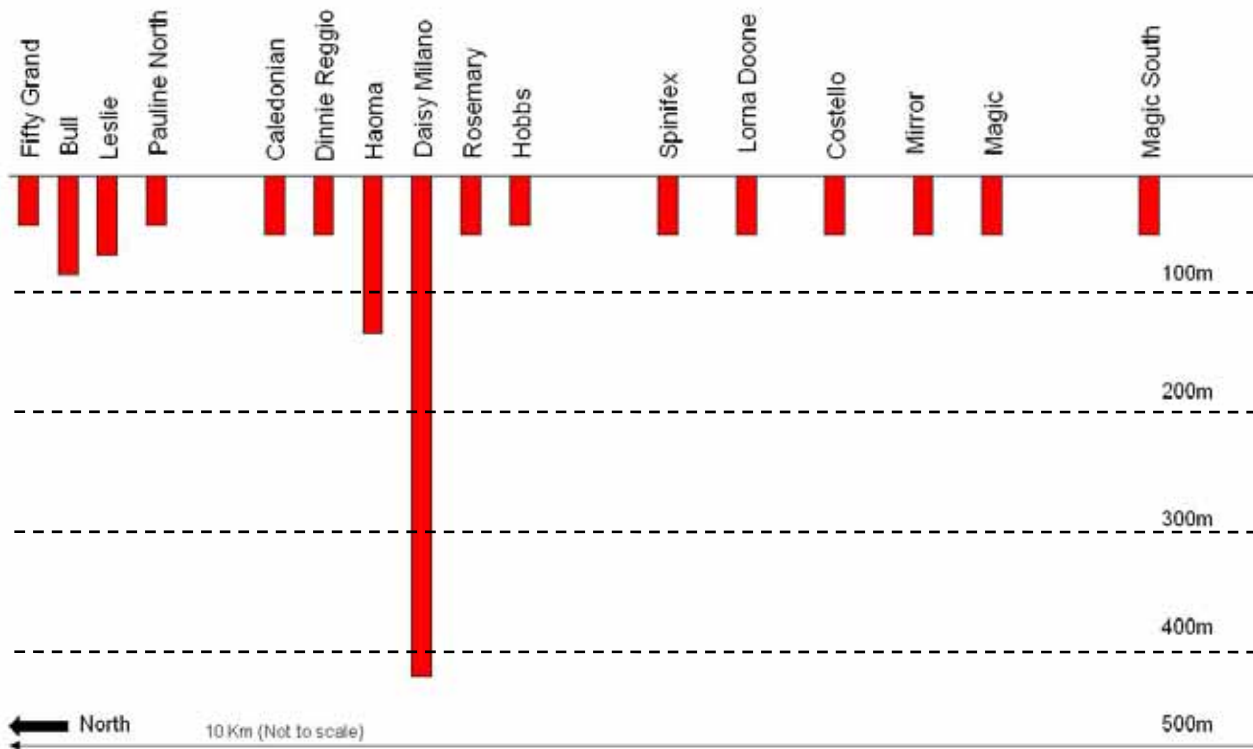


Mount Monger - Background

- 50 km south east of Kalgoorlie:
 - suppliers / personnel / infrastructure
- Historic production >400,000 oz Au:
 - multiple underground and open cut mines
 - high grade mineralised system
 - unconsolidated gold field until 2003
- Lakewood Processing Facility:
 - 5 km south east of Kalgoorlie
 - 300,000 tpa capacity
 - currently 25% utilised



Multi Mine Operation & Potential At Depth



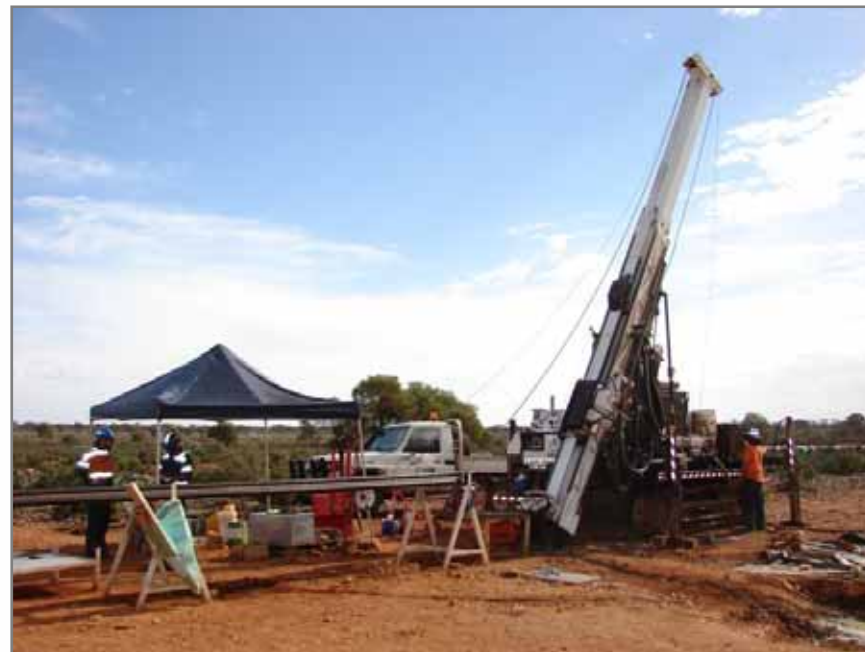
Historic Mined Grade	
Daisy Main	28.4 g/t
Milano (Upper)	33.8 g/t
Milano (Lower)	15.6 g/t
Rosemary	27.4 g/t
Haoma	28.9 g/t
Dinnie Reggio	32.6 g/t
Caledonian	7.9 g/t
Pauline	11.8 g/t
Leslie	21.8 g/t
Bull	28.6 g/t
Average	23.7 g/t



Mount Monger Fly Through



- Due diligence report (2003):
 - 2.0 to 4.5M oz
 - 9 independent zones <500 m depth
- Geology:
 - multiple lines of mineralisation
 - 10 km strike
- Past exploration:
 - grossly under explored
 - 3% of holes >100 m
 - restricted due to multiple owners
- Exploration plan:
 - near mine underground and open cut targets
 - step out drilling



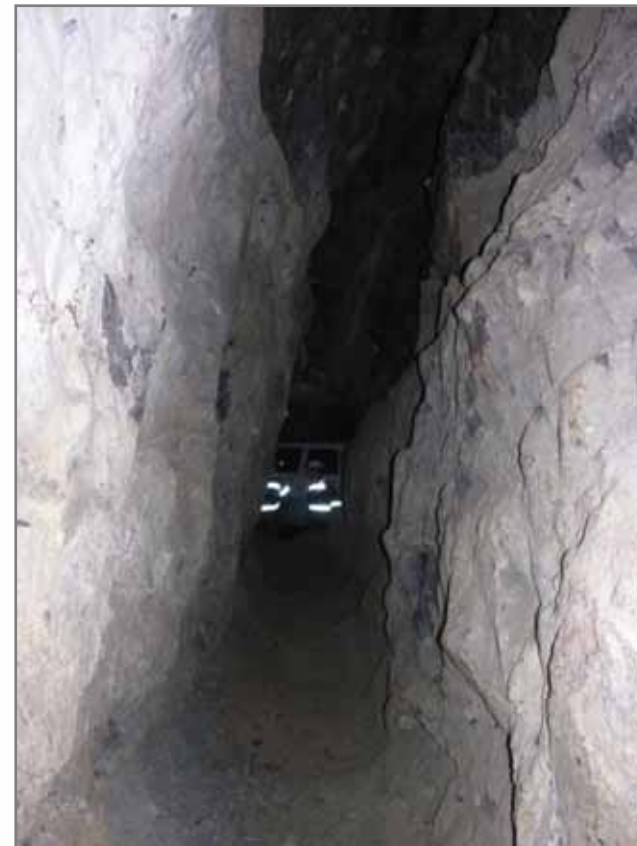
Scaling Up

UNDERGROUND

- Daisy Milano (251,000 t at 30.8 g/t Au):
 - 35,000 to 40,000 oz Au pa FY2008/2009
 - 5 year life of mine
- Caledonian and Haoma:
 - encouraging drilling results
 - close to existing infrastructure
- Rosemary:
 - drilling commencing December 2008 qtr

OPEN CUT

- Lorna Doone and Costello (205,000 t at 3.86 g/t Au):
 - free dig
 - decision to mine December 2008 qtr
- Christmas Flats:
 - resource announcement June 2008 qtr
 - decision to mine March 2009 qtr



So What's Changed?

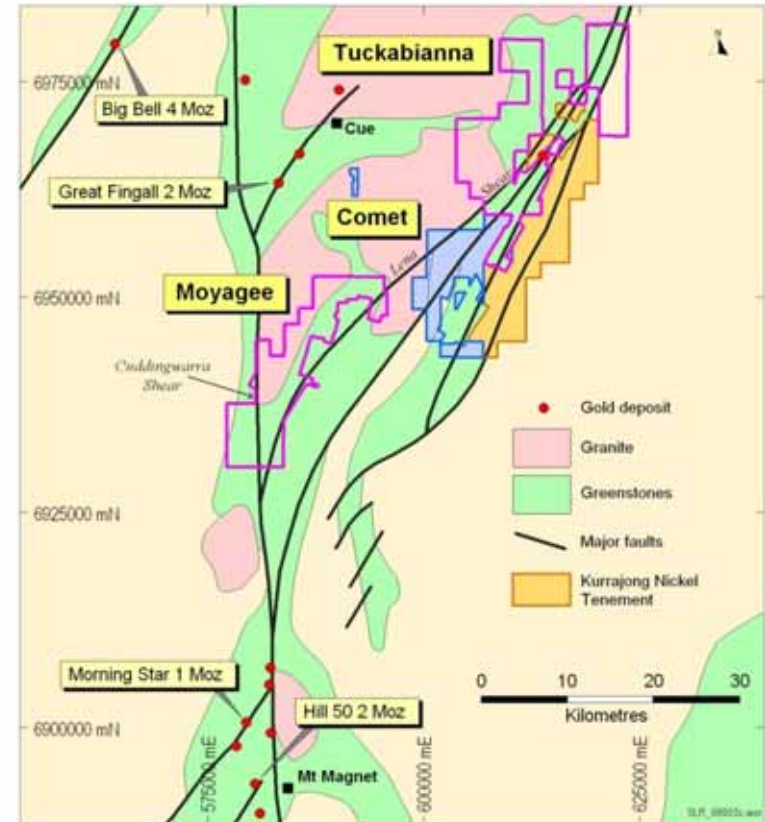
Factor	Previous	Current
Ownership	Multiple owners	Consolidated gold field
Operations	Single mine focus	Multiple surface and underground mines
Geology	Mine / tenement specific	Field wide analysis, improved interpretation and structural study
Underground Mining	Bulk mining - dilution	Selective mining on multiple structures - minimal dilution
Workforce	70	35
Processing	Batch toll treating	Owner operator
Exploration	Limited - 3% holes >100 m	Fully funded and field wide

Murchison Fly Through



Murchison Summary

- 4,884,000 t at 4.42 g/t Au for 693,000 oz
- Surrounded by multi Moz deposits
- 65 km strike
- Under drilled >100 m
- Exploration upside 3 Moz
- Pre feasibility study commenced



- Strong financial position (31 March 2008):
 - cash: \$8M
 - gold in ore: \$6M
 - hedging: Nil
 - debt: Nil
- Mount Monger Operations:
 - cash costs: <A\$500 oz
- Near term financial upside:
 - open cut
 - Lorna Doone, Costello and Christmas Flats
 - underground
 - Haoma and Caledonian



Why Silver Lake Resources?

- Experienced and capable team
- High grade producing asset:
 - >35,000 oz Au pa
 - 300,000 tpa processing facility
 - cash cost <A\$500 oz
- Strong financial position:
 - cash, no debt, unhedged
- Significant exploration upside:
 - 1.1 Moz Au resource base
 - 2 to 5 Moz Au potential
- Growth:
 - two large production centres
 - multiple surface and underground mines



Contact



Head Office:

31 Malcolm Street

West Perth WA 6005

Phone: (08) 6313 3800

Fax: (08) 6313 3888

Website: www.silverlakeresources.com.au

Contact:

Les Davis

Managing Director

Mobile: 0428 273 501

ldavis@silverlakeresources.com.au

Chris Banasik

Director of Exploration and Geology

Mobile: 0428 956 911

cbanasik@silverlakeresources.com.au

Tracey Caddis

Manager Marketing Relations

Mobile: 0410 065 066

tcaddis@silverlakeresources.com.au





Presentation Appendix

ASX: SLR

ABN: 38 108 779 782

www.silverlakeresources.com.au

Resource Tabulation

Deposit	Measured Resources			Indicated Resources			Inferred Resources			Total Resources ¹		
	Ore t '000s	Grade g/t Au	Total Oz Au '000s	Ore t '000s	Grade g/t Au	Total Oz Au '000s	Ore t '000s	Grade g/t Au	Total Oz Au '000s	Ore t '000s	Grade g/t Au	Total Oz Au '000s
Daisy Milano ²	93.6	37.9	114.1	65.4	20.8	43.7	92.0	30.8	91.2	251.0	30.8	249.0
Costello ³	-	-	-	-	-	-	94.0	3.7	11.2	94.0	3.7	11.2
Lorna Doone ³	-	-	-	-	-	-	111.0	4.0	14.3	111.0	4.0	14.3
Total Mount Monger	93.6	37.9	114.1	65.4	20.8	43.7	297.0	12.2	116.7	456.0	18.7	274.4
Comet ¹	-	-	-	1,442.3	3.3	154.6	374.0	6.4	77.0	1,816.3	4.0	231.6
Moyagee	-	-	-	-	-	-	820.2	8.5	224.2	820.2	8.5	224.2
Rothsay	-	-	-	-	-	-	591.2	7.0	132.9	591.2	7.0	132.9
Tuckabianna	-	-	-	1,410.0	3.2	146.0	837.5	3.4	91.6	2,247.5	3.3	237.6
Total Murchison	-	-	-	2,852.3	3.3	300.6	2,622.9	6.2	525.5	5,475.2	4.7	826.1
Total Lake Silver	93.6	37.9	114.1	2,917.7	3.7	344.3	2,919.9	6.8	642.2	5,931.3	5.8	1,100.6

1. Silver Lake will complete its acquisition of the Comet project on 1 July 2008.